

PCG Compressed Gas Gauge

Description & Features

- Economical 2" (50mm) gauge with built-in safety features
- UL Listed
- Safety blowout black steel case
- Easy to read colored pressure zones on the dial

Applications

- Beverage dispensing, regulators and tanks.
Low pressures are used on the down stream sides of a regulator. High pressures are used for measuring cylinder gas or tank pressure

Specifications

Dial Size

1.5"(40mm), 2"(50mm)

Pressure Range

0...30 psi to 0...3000 psi (0...2 bar to 0...200 bar)

Case Material

Steel with blowout back, painted black

Lens Material

Acrylic

Ring Material

Steel, painted black, push on

Pointer

Aluminum painted black

Bourdon Tube

Brass

Movement

Brass

Socket Material

Brass



Connection

1/8", 1/4" in NPT, BSP, BSPT

Protection

IP 52

Working Pressure

Maximum 75% of full scale value

Over-Pressure Limit

25% of full scale value

Ambient Temperature

-40°F to 150°F (-40°C to 65°C)

Process Temperature

-40°F to 150°F (-40°C to 65°C)

Accuracy

±3%-2%-3% ANSI/ASME Grade B

Option

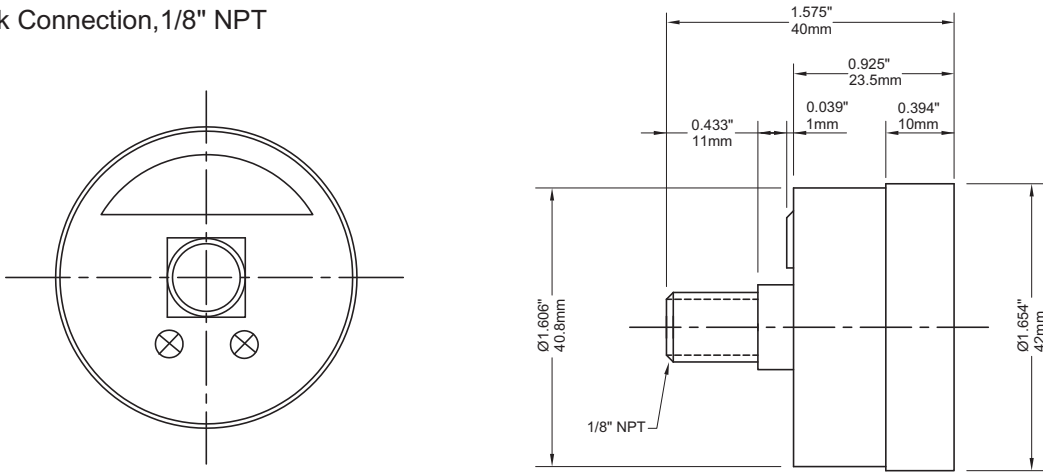
UL252A recognized - low pressures 30psi to 300psi
UL404 listed - high pressures 2000psi and 3000psi

Order Information

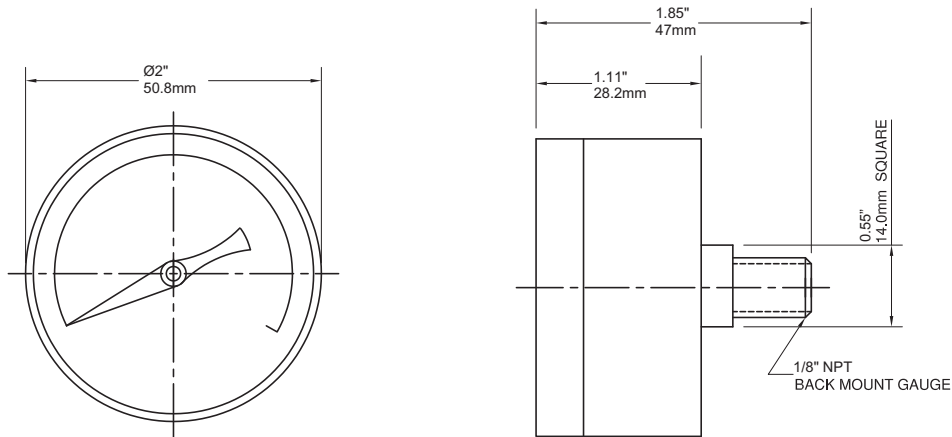
Series/ Dial Size/ Case Materials/ Wetted Parts/ Configuration/ Connection Size/ Thread/ Range/ Option

Dimensions

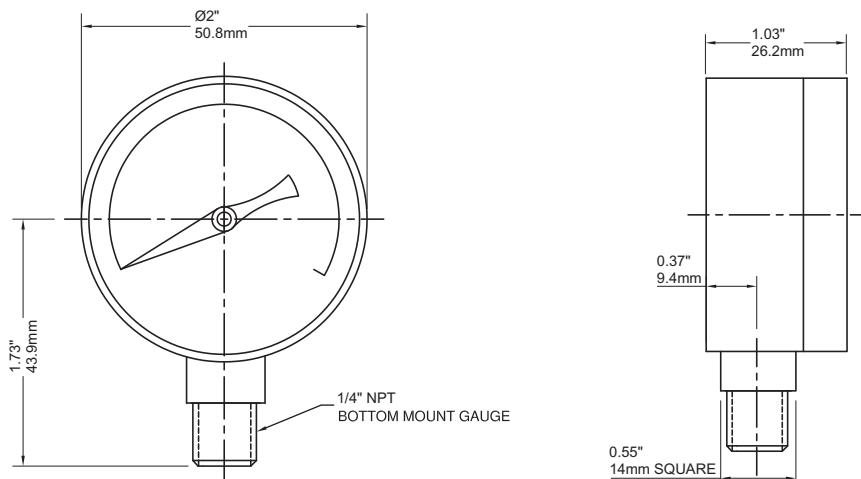
1.5" Back Connection, 1/8" NPT



2" Back Connection, 1/8" NPT



2" Bottom Connection, 1/4" NPT



PCG Compressed Gas Gauge

Ordering Code PCG Series

| Field No. | Code | Specifications | | | | | |
|------------------------|--------------------|--|-------|--------|-------|--------|-------|
| 1. | PCG | Series | | | | | |
| 2. | 15 | Dial Size 1.5" (40mm) | | | | | |
| | 20 | 2.0" (50mm) | | | | | |
| 3. | Y | Case Materials Steel painted black | | | | | |
| | | Wetted Parts Brass | | | | | |
| 4. | B | Brass | | | | | |
| | Z | Special | | | | | |
| 5. | | Configuration | | | | | |
| | | A Bottom connection, stem mounting | | | | | |
| | | D Back connection, stem mounting | | | | | |
| | | Z Special | | | | | |
| | | | | | | | |
| 6. | 8 | Connection 1/8" | | | | | |
| | 4 | 1/4" | | | | | |
| | Z | Special | | | | | |
| 7. | | Thread | | | | | |
| | | N NPT | | | | | |
| | | B BSP (G) | | | | | |
| | | T BSPT (R) | | | | | |
| 8. | | Special Special | | | | | |
| | | Range (XXXX) | | | | | |
| Standard Ranges | | | | | | | |
| | MPa | 0/1 | 0/10 | | | | |
| | | 0/1.6 | 0/16 | | | | |
| | bar | 0/0.25 | 0/2.5 | | | 0/10 | 0/100 |
| | | 0/0.4 | 0/4 | | | 0/16 | 0/160 |
| | | 0/0.6 | 0/6 | | | 0/25 | |
| | | | | | | 0/4 | 0/40 |
| | psi | | | 0/160 | 0/800 | 0/3000 | |
| | | 0/30 | 0/200 | 0/1000 | | | |
| | | 0/60 | 0/300 | 0/1500 | | | |
| | kg/cm ² | 0/100 | 0/600 | 0/2000 | | | |
| | | | | | | 0/10 | 0/100 |
| | | | | | | 0/16 | 0/160 |
| | kPa | | | | | 0/1000 | |
| | | | | | | 0/1600 | |
| | | | | | | 0/250 | |
| | | | | | | 0/400 | |
| 9. | SY | Options Use no oil | | | | | |
| | SL | Oxygen Cleaning | | | | | |
| | SO | Calibration Certificate | | | | | |
| | GH | Material Certificate | | | | | |