

Description & Features

- Economical, non-sparking brass case gauge
- 1.5", 2" & 2.5" brass case
- UL Listing on the 4,000psi range
- "USE NO OIL" on the dial
- Brass socket
- Threaded-on plastic lens

Applications

- Welding tank regulators or manifolds, beverage dispensing regulators and other pressurized tanks
- Used on the down stream side of a regulator and the high pressures are UL Listed for measuring cylinder gases

Specifications

Dial Size

1.5" (40mm), 2" (50mm), 2.5" (63mm) white aluminum

Pressure Range

0...4000 psi (0...280 bar)

Case Material

Brass, polished

Lens Material

Plexiglass

Ring Material

Brass, polished

Pointer

Aluminum, painted black

Bourdon Tube

Phosphor bronze

Movement

Brass

Socket Material

Brass

Connection

Dial size 1.5": 1/8" & dial size 2", 2.5": 1/4"
in NPT, BSP, BSPT



Welding

Silver alloy

Protection

IP 52

Working Pressure

Maximum 75% of full scale value

Over-pressure Limit

25% of full scale value

Process Temperature

-40°F to 150°F (-40°C to 65°C)

Ambient Temperature

-40°F to 150°F (-40°C to 65°C)

Accuracy

±3%-2%-3% ANSI/ASME Grade B

Options

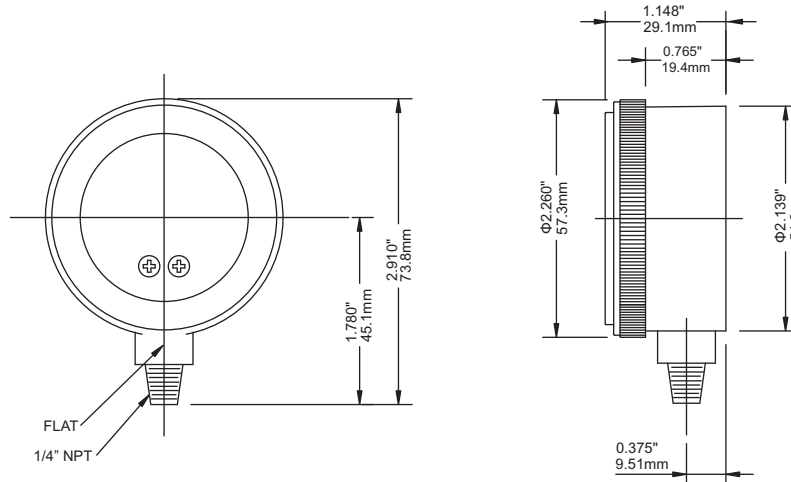
Use no oil
Oxygen Cleaning
Calibration Certificate

Order Information

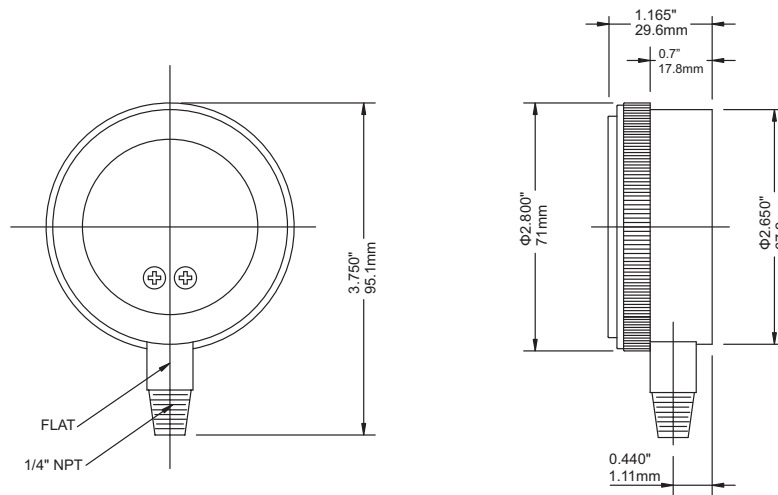
Series/ Dial Size/ Case Materials/ Wetted Parts/ Configuration/ Connection Size/ Thread/ Range/ Option

Dimensions

2" Bottom Connection



2.5" Bottom Connection



PWL Welding Gauge

Ordering Code PWL Series

Field No.	Code	Specifications						
1.	PWL	Series						
2.	10 20 25	Dial Size						
		1.5" (40mm)						
		2.0" (50mm)						
3.	B	Case Materials						
		Brass, polished						
		Wetted Parts						
4.	B	Brass						
	Z	Special						
5.	A Z	Configuration						
		Bottom connection, stem mounting						
		Special						
6.	8 4 Z	Connection						
		1/8"						
		1/4"						
7.	N B T Z	Thread						
		NPT						
		BSP (G)						
		BSPT (R)						
8.	Z	Range (XXXX)						
		Standard Ranges						
		MPa	0/1	0/10				
			0/1.6	0/16				
			0/2.5	0/25				
		bar	0/0.4	0/4			0/10	0/100
			0/0.6	0/6			0/16	0/160
							0/25	0/250
							0/4	0/40
							0/6	0/60
					0/160		0/3000	
		psi	0/30	0/200			0/4000	
			0/60	0/400				
			0/100	0/600				
		kg/cm ²		0/10	0/100			
	0/16		0/160					
	0/25		0/250					
0/4	0/40							
kPa	0/6	0/60						
					0/1000			
					0/1600			
					0/2500			
				0/400	0/4000			
			0/600	0/6000				
9.	SY	Use no oil						
	SL	Oxygen Cleaning						
	SO	Calibration Certificate						